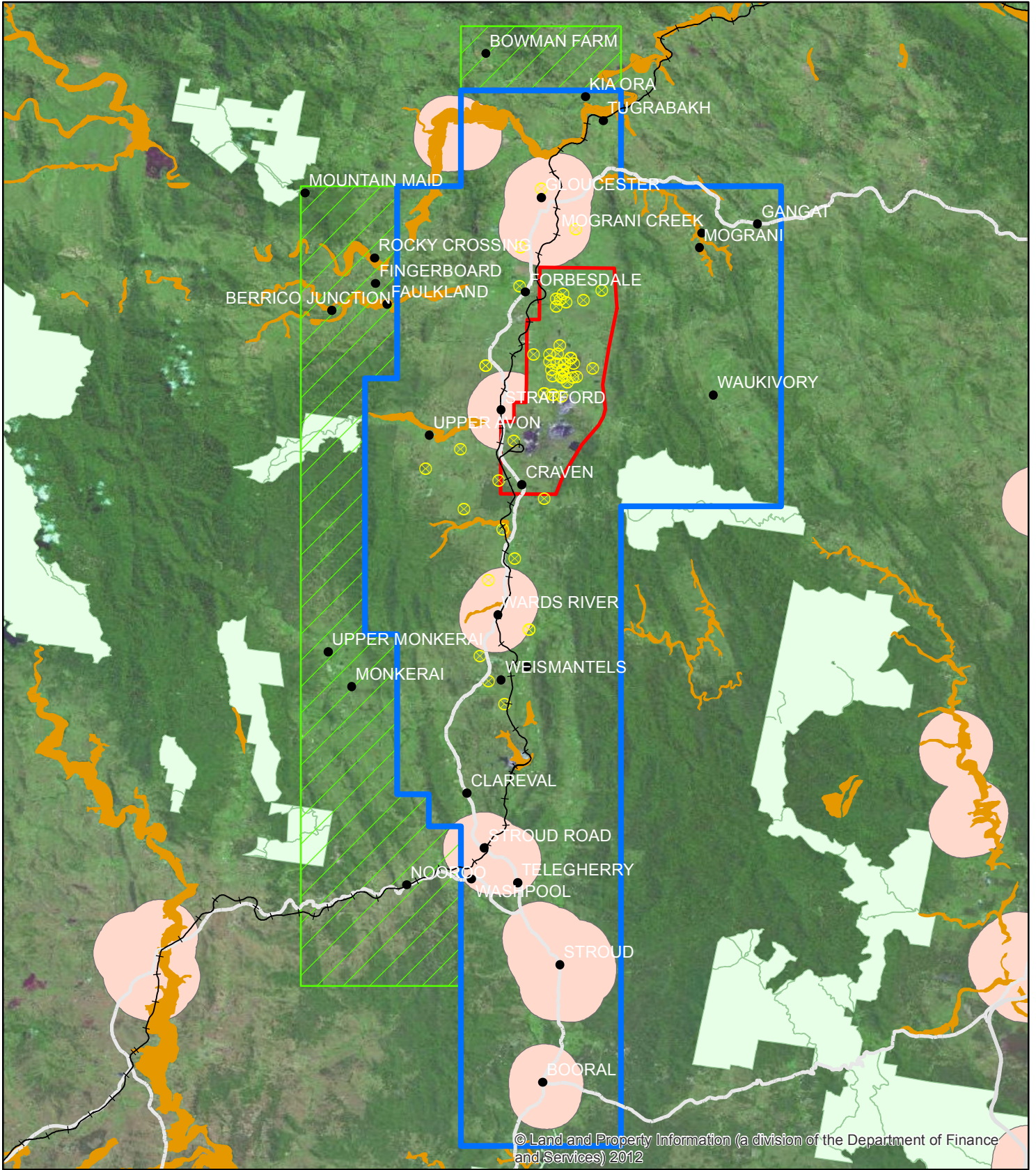


Gloucester PEL 285 - Exclusion Zones



© Land and Property Information (a division of the Department of Finance and Services) 2012

- Renewed PEL285 Area
- Relinquished PEL285 Area
- Stage 1 Development Area
- Biophysical SAL
- Residential Exclusions
- Railways
- Major Roads
- X Existing Exploration Wells

